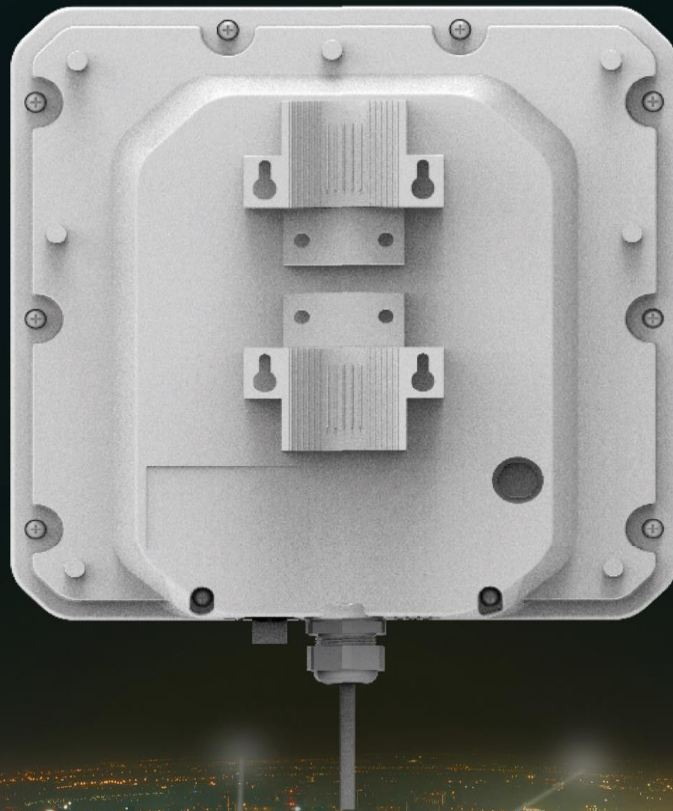




LEAX/CoreNOC/BSCT Group

LCE122 CAT12 LTE Outdoor CPE



LCE122 is an advanced outdoor LTE multi service product specifically designed to meet integrated data needs for residential, business and enterprise users. The product supports Gigabit networking. It enables wide service coverage and provides high data throughput and networking features to customers who needs easy broadband access.

Leax Arkivator Telecom

HARDWARE SPECIFICATIONS

SPEC	DESCRIPTION
LTE CHIP SET	GCT GDM7243A
LTE STANDARD	3GPP RELEASE 11 CAT 12
FLASH	2GB
DDR	2GB
POWER SUPPLY	TYPICAL VALUE: 24V/-48VDC OR COMPLIANT TO IEEE 802.3AT
ETHERNET LAN PORT/ POE INPUT	1 * GIGABIT RJ45 POE LAN PORT 10/100/1000 AUTO-SENSING, AUTO-MDI/MDIX
IP RATING	IP67
LED	8 LED INDICATORS (PWR, SYS, NET, SIM, RF SIGNAL*4)
USIM	1.8V/3.0V 2FF USIM
RJ45	1 * GIGABIT RJ45
RESET	RESET AND RESTORE FACTORY SETUP
ANTENNA	4 DIRECTIONAL ANTENNAS
DIMENSIONS	288MM X 288 MM X 88MM
WEIGHT	ODU < 2KG
POWER CONSUMPTION	< 7W
POWER ADAPTER	AC 90~240V, DC 24V/0.5A

ENVIRONMENT SPECIFICATIONS

FEATURE	CAPABILITY
OPERATING TEMPERATURE	-40° ~ 65°
STORAGE TEMPERATURE	-40° ~ 85°
OPERATING HUMIDITY	10 ~ 90%
STORAGE HUMIDITY	5 ~ 95%

TOPOLOGY



RF SPECIFICATIONS

FEATURE	CAPABILITY
SUPPORTED BANDS FDD TDD	B1/2/3/4/5/7/8/12/17/20/28A /28B B38/41/42/43/48
CA ⁽¹⁾	SUPPORT BOTH INTRA AND INTER BAND CA DL 2CA 4X4 MIMO DL 4CA 2X2 MIMO UL 2CA
MIMO	DL 2X2 (4CA 256QAM); DL 4X4 (2CA 64QAM); UL 2X2 64QAM;
RF CHANNELS	1TX, 2TX
TRANSMISSION MODE	TM1/2/3/4/5/6/7/8/9
OUTPUT POWER@25°C	23±2 DBM
RECEIVER SENSITIVITY FDD TDD	-100DBM/10MHZ@QPSK -97DBM/20MHZ@QPSK
LTE ANTENNA	4 DIRECTIONAL ANTENNAS
LTE ANTENNA GAIN ⁽²⁾	0.7~1G 6 DBI 1.7~2.7G 10 DBI 3.4~3.8G 16 DBI

(1) More CA information could get from CA configurations doc.

(2) 4 antennas in diversity mode can get 3 dB diversity gain (with the algorithm) against 2 antennas.

SOFTWARE SPECIFICATIONS

LANGUAGE SETTINGS: SIMPLIFIED CHINESE, ENGLISH ⁽¹⁾	
SUPPORT NAT/BRIDGE/ROUTER MODE	
SUPPORT HTTP OR HTTPS WEB SERVER	
SUPPORT TWO USERS (ADMIN USER AND NORMAL USER) WITH DIFFERENT AUTHORIZATIONS	
PEAK THROUGHPUT	FDD DL 800MBPS (4CC 256QAM); TDD DL 560MBPS (4CC 256QAM); TDD UL 30MBPS(CONFIGURATION 2:7);
LAN	1000MBIT/S MDI/MDIX AUTO-SENSING IEEE802.3/3U/3AB COMPATIBLE
PIN MANAGEMENT, SIM CARD AUTHENTICATION	
ENCRYPTION BACKUP OF CURRENT SETTINGS AND RESTORE OF THE BACKUP SETTINGS	
DIAGNOSIS RESULTS AND OPERATION LOGS EXPORT	
STATISTICS	LINK STATUS (LAN) TRANSMITTED/RECEIVED PACKETS UP TIME
SUPPORT MULTI-APN	
VPN	L2TP V2/V3 PPTP GRE L2/L3 GRE OVER IPSEC L2TP OVER IPSEC IPSEC
IPV6/IPV4 DUAL STACK	
STATUS ⁽²⁾	SIGNAL STRENGTH NETWORK TYPE NETWORK CONNECTION STATUS SIM CARD STATUS OPERATOR NAME, SYSTEM MODE
SUPPORT FULL BAND OR PREFERRED BAND	
SUPPORT PCI LOCK (CELL LOCK), BAND LOCK, PLMN LOCK	
ONLY CARRIER SIM SHALL WORK IN THE CPE	
SUPPORT BIP	

(1) Multiple languages can be customized

(2) Can be customized

DEVICE MANAGEMENT

INTEGRITY CHECK	IMAGE ONE VERSION IMAGE ONE CHECKSUM IMAGE TWO VERSION IMAGE TWO CHECKSUM
VERSION ROLLBACK	AUTOMATIC ROLLBACK TO PREVIOUS VERSION WHEN UPGRADE FAILS
SOFTWARE UPGRADE HTTP/FTP AUTO UPGRADE	FULL IMAGE UPGRADE MANUAL FIRMWARE UPGRADE UPGRADE FIRMWARE ENABLE / DISABLE UPGRADE URL VERSION FILE PERIODICAL NEW FIRMWARE CHECK (HR.: 1~744) START TIME RANDOM TIME
TR069	SUPPORTS UPLOAD/DOWNLOAD OF THE ACS SPECIFIED FILE SUPPORT DOWNLOAD OF CPE CONFIGURATION FILE SUPPORT PARAMETER CONFIGURATION & QUERY (1) SUPPORT REMOTE UPGRADE SUPPORT CPE VERSION UPDATE SUPPORTS DEBUGGING OPERATIONS SUPPORT CYCLE MONITOR
PORT MIRROR	ENABLE AND DISABLE OPERATION SUPPORTED
SYSLOG	SYSTEM LOG FUNCTION SUPPORTED AND CAN BE SENT TO THE PC VIA LAN
DIAGNOSTICS	SUPPORT THE PING AND TRACE ROUTE

(1) Can be customized

BRIDGE MODE

DATA TRAFFIC FORWARD	FORWARD THE DATA TRAFFIC BETWEEN THE LTE NETWORK AND PCS.
PC SUPPORT	MAXIMUM 4 PCS, EACH PC CONNECTS TO THE LTE PUBLIC NETWORK VIA ONE APN
TR 069	ONE APN CAN BE ALLOCATED FOR THE MODULE AND THE MODULE CAN BE MANAGED VIA TR-069 OR UPDATE VERSION REMOTELY
PUBLIC IP ALLOCATION	PC GETS THE PUBLIC IP FROM THE DHCP SERVER IN THE CPE. THIS IS THE PUBLIC IP THAT CPE GETS FROM LTE NETWORK
MULTIPLE APN	UP TO 4 APNS, STATIC ROUTE CAN BE SET FOR EACH APN

ROUTER MODE

LAN	2 IP ADDRESSES ON THE LAN AND FOR 2 DIFFERENT NETWORKS CAN BE SET
WAN	WAN IP CAN BE SET DYNAMICALLY OR STATICALLY
ROUTER PROTOCOL	STATIC ROUTE
DNS	CAN BE SET
MULTIPLE APN	UP TO 4 APNS, STATIC ROUTE CAN BE SET FOR EACH APN

NAT MODE

NAT	SUPPORT NAT FUNCTION
FIREWALL	CAN BE ENABLED OR DISABLED
MULTIPLE APN	UP TO 4 APNS, STATIC ROUTE CAN BE SET FOR EACH APN
DMZ	THE DMZ CAN BE SET.
DHCP	SUPPORT THE DHCP SERVER
DNS	SUPPORT AUTOMATIC/MANUAL DNS CONFIGURATION,

FIREWALL FEATURES

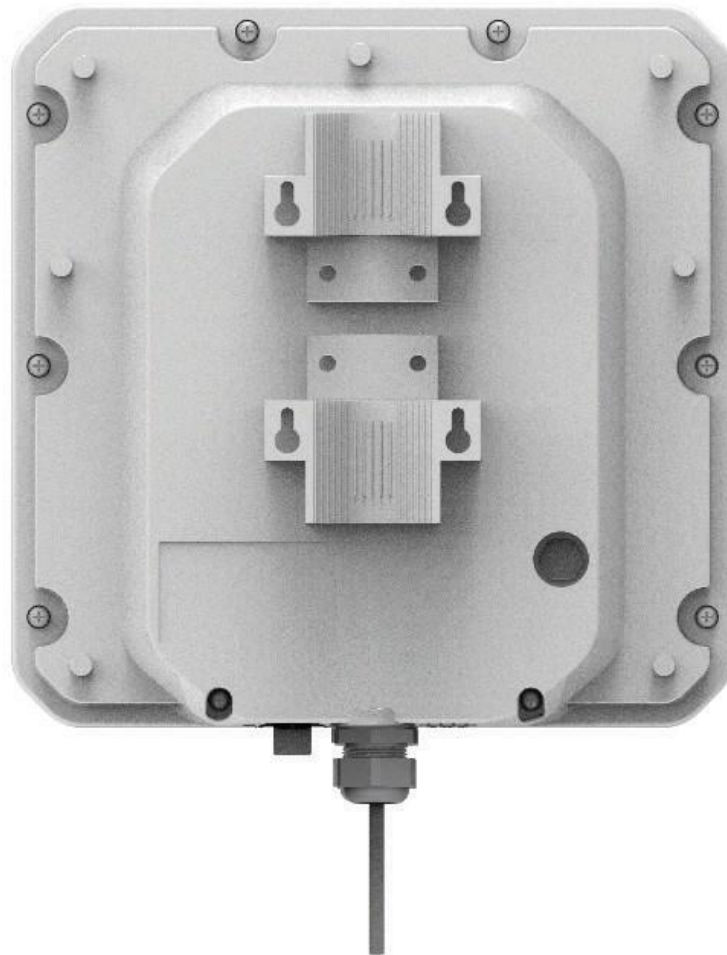
FIREWALL CONFIGURATION	ALLOW PING FROM WAN
	ALLOW HTTPS LOGIN FROM WAN
	HTTPS LOGIN PORT FROM WAN
	DMZ
	DDOS
	REDIRECT ICMP TO THE HOST
SUPPORT THE IP FILTER	
SUPPORT THE MAC FILTER	
SUPPORT THE URL FILTER	
SUPPORT UPNP	
SUPPORT THE PORT FORWARDING	

APPENDIX - DELIVERS

LCE122 OUTDOOR CPE	1 PCS
PO E ADAPTER	1 PCS
ACCESSORIES FOR POLE MOUNTING	1 PCS
QUICK START MANUAL	1 PCS

(1) Detail Delivers need to be defined by customer

OUTDOOR CPE WITH HIGH GAIN ANTENNA, IP67



PRODUCT SPECS

- Module Chip: GDM7243A
- Bands Support: Band 41/42/43/48 (CBRS support)
- Down Link: 4CA 2x2 256QAM or 2CA 4x4 MIMO or 8x4
- Up Link: CA, UL SU-MIMO
- Antenna: Built-in 4 LTE, 17dBi (3.5GHZ)
- Power: 24V/48V POE support
- FCC Certified: Yes (only on CBRS Band)

BSCT GROUP

One step ahead

Info@BSCTGroup.com

